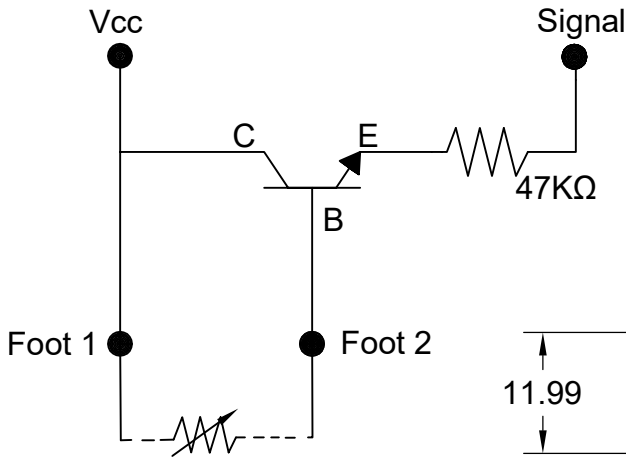
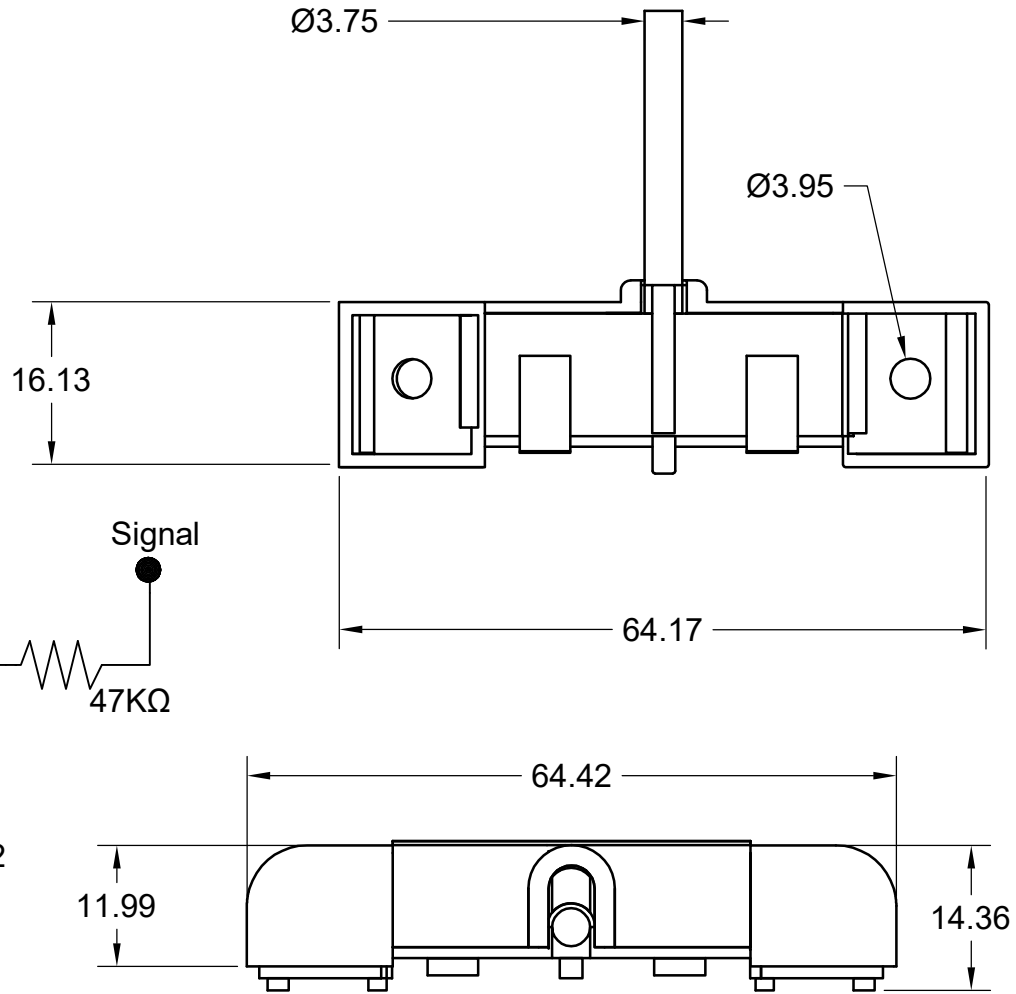


- DC ANALOG SENSOR
- HOUSING: ABS, POTTED
- WORKING VOLTAGE: 5VDC-24VDC
- MAX. VOLTAGE: 24VDC
- MAX. WORKING CURRENT: 0.5A
- TEMPERATURE: -10°C - +65°C
- CABLE LENGTH OPTIONS: 6 FT (2M), 30 FT (10M)
- RED WIRE TO POSITIVE, WHITE WIRE TO NEGATIVE (GROUND)
- AMPLIFICATION: NPN TYPE



RESISTANCE OF WATER 6-8MΩ



PROJECT
LS-LEAK-2M/4M

TITLE
DC ANALOG LEAK SENSOR
GENERAL ARRANGMENT

APPROVED	SJS	SIZE	CODE	DWG NO	REV
CHECKED	8/17/2021	A			C
DRAWN	Sean D.	8/17/2021	SCALE 2:1.5	WEIGHT	SHEET 1/1